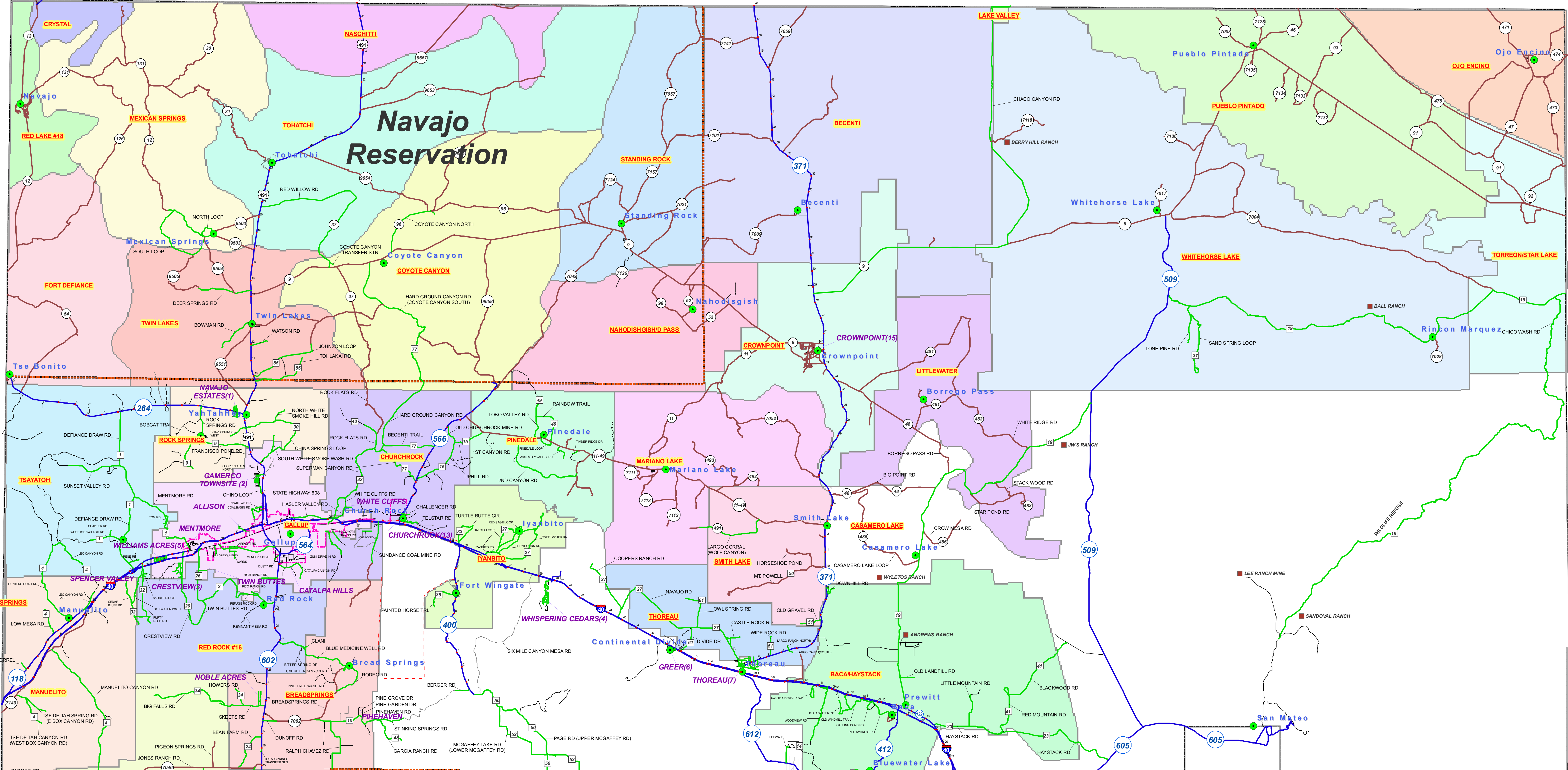


R21W R20W R19W R18W R17W R16W R15W R14W R13W R12W R11W R10W R9W R8W R7W R6W R5W

SAN JUAN COUNTY, NM



R15W R14W R13W R12W R11W R10W R9W R8W R7W R6W R5W

CIBOLA COUNTY, NM

T20N T19N T18N T17N T16N T15N T14N T13N T12N T11N T10N T9N

R21W R20W R19W R18W R17W R16W

ARIZONA COUNTY, AZ

SANDOVAL COUNTY, NM

T20N T19N T18N T17N T16N T15N T14N T13N T12N T11N T10N T9N

R21W R20W R19W R18W R17W R16W

T20N T19N T18N T17N T16N T15N T14N T13N T12N T11N T10N T9N

R21W R20W R19W R18W R17W R16W

T20N T19N T18N T17N T16N T15N T14N T13N T12N T11N T10N T9N

R21W R20W R19W R18W R17W R16W

T20N T19N T18N T17N T16N T15N T14N T13N T12N T11N T10N T9N

R21W R20W R19W R18W R17W R16W

T20N T19N T18N T17N T16N T15N T14N T13N T12N T11N T10N T9N

R21W R20W R19W R18W R17W R16W

T20N T19N T18N T17N T16N T15N T14N T13N T12N T11N T10N T9N

R21W R20W R19W R18W R17W R16W

T20N T19N T18N T17N T16N T15N T14N T13N T12N T11N T10N T9N

R21W R20W R19W R18W R17W R16W

T20N T19N T18N T17N T16N T15N T14N T13N T12N T11N T10N T9N

R21W R20W R19W R18W R17W R16W

T20N T19N T18N T17N T16N T15N T14N T13N T12N T11N T10N T9N

R21W R20W R19W R18W R17W R16W

T20N T19N T18N T17N T16N T15N T14N T13N T12N T11N T10N T9N

R21W R20W R19W R18W R17W R16W

T20N T19N T18N T17N T16N T15N T14N T13N T12N T11N T10N T9N

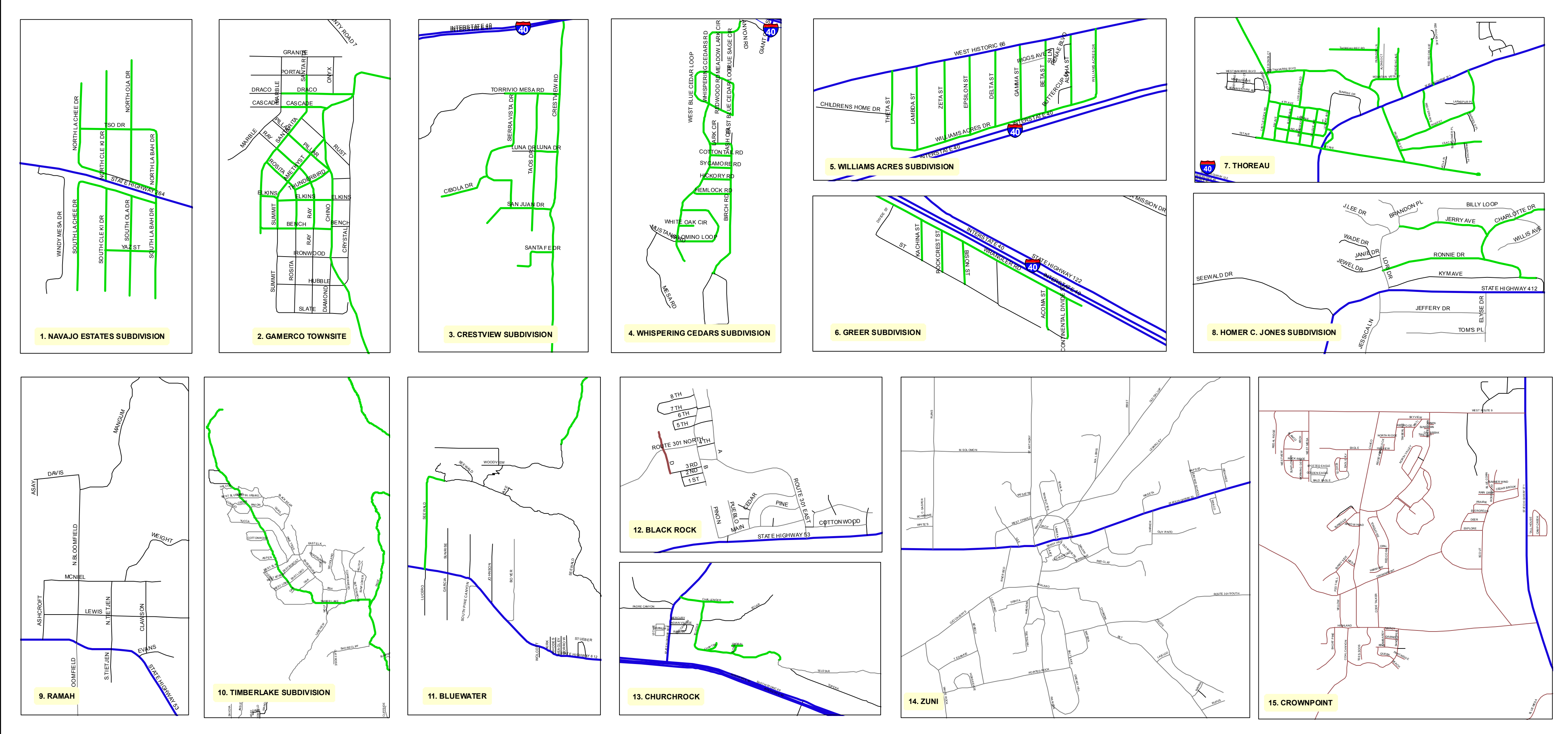
R21W R20W R19W R18W R17W R16W

T20N T19N T18N T17N T16N T15N T14N T13N T12N T11N T10N T9N

R21W R20W R19W R18W R17W R16W

T20N T19N T18N T17N T16N T15N T14N T13N T12N T11N T10N T9N

SUBDIVISION/ COMMUNITY INSET MAPS
(NOT TO SCALE)



LEGEND

- COMMUNITY
- MILE MARKERS
- POLITICAL BOUNDARY
- Military Reservation
- Municipal Boundary
- Indian Reservation
- County Boundary

ROAD TYPE

- Federal/State Road
- County Road
- Navajo/BIA road
- Private or Non-Maintained Road
- On/Off Ramp
- Maintained - Other

Interstate Highway

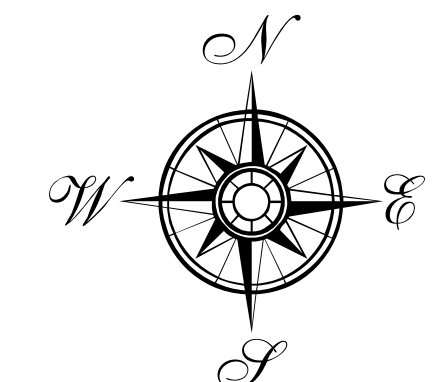
- Interstate Highway
- US Highway
- State Highway
- Navajo/BIA Route
- County Road

1 inch equals 2.7 miles
APPROXIMATE SCALE

6	5	4	3	2	1
7	8	9	10	11	12
13	14	15	16	17	18
19	20	21	22	23	24
25	26	27	28	29	30
31	32	33	34	35	36

PLSS SECTIONS

Map edited and published by Melvic Degracia
McKinley County GIS Center, Feb. 9, 2005
This map is a diagrammatic layout of streets,
roads, towns and political boundaries.
The map information was extracted from the
US Census Bureau TIGER Prototype and
Pre-census files. The TIGER files were updated
with information provided by various government
agencies and Global Positioning Systems (GPS).
The accuracy of this map is not implied nor guaranteed.



McKINLEY COUNTY, NM
NAVAJO NATION CHAPTERS
AND MAINTAINED ROAD MAP