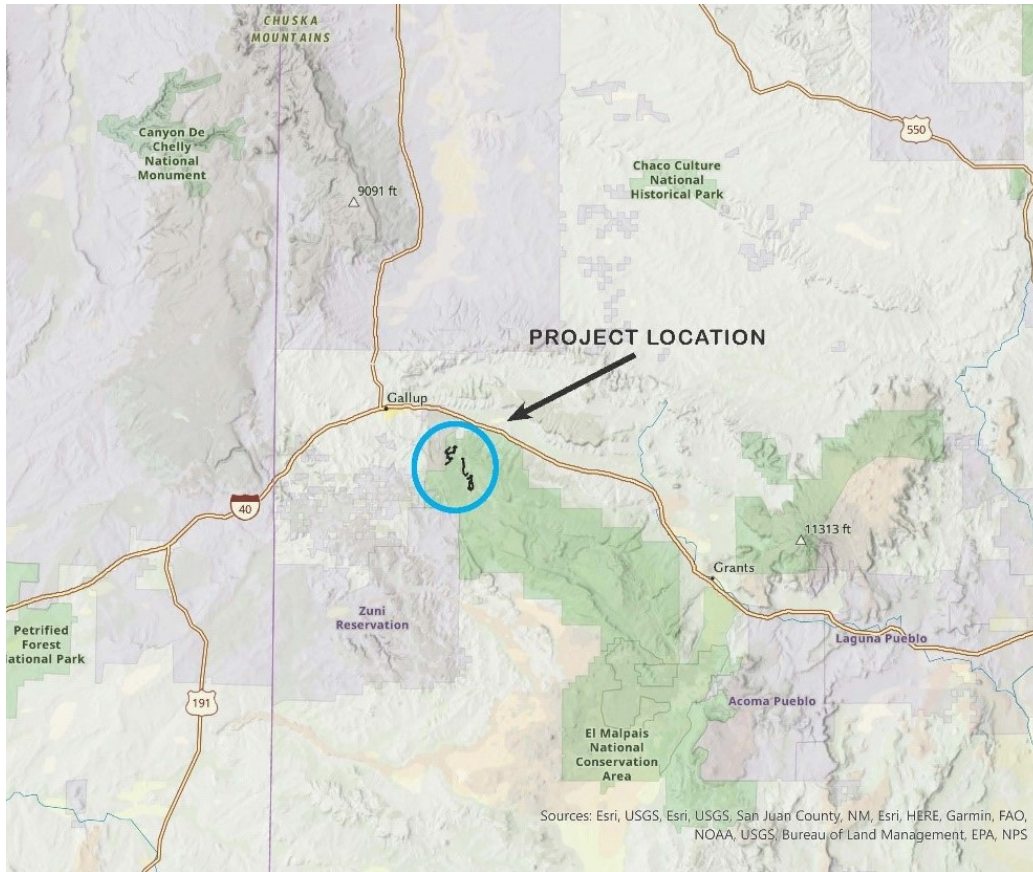


STANDARD TRAIL DESIGN AND SPECIFICATIONS

ZUNI MOUNTAINS TRAIL PROJECT – Milk Ranch-McGaffey CIBOLA NATIONAL FOREST, MOUNT TAYLOR RD

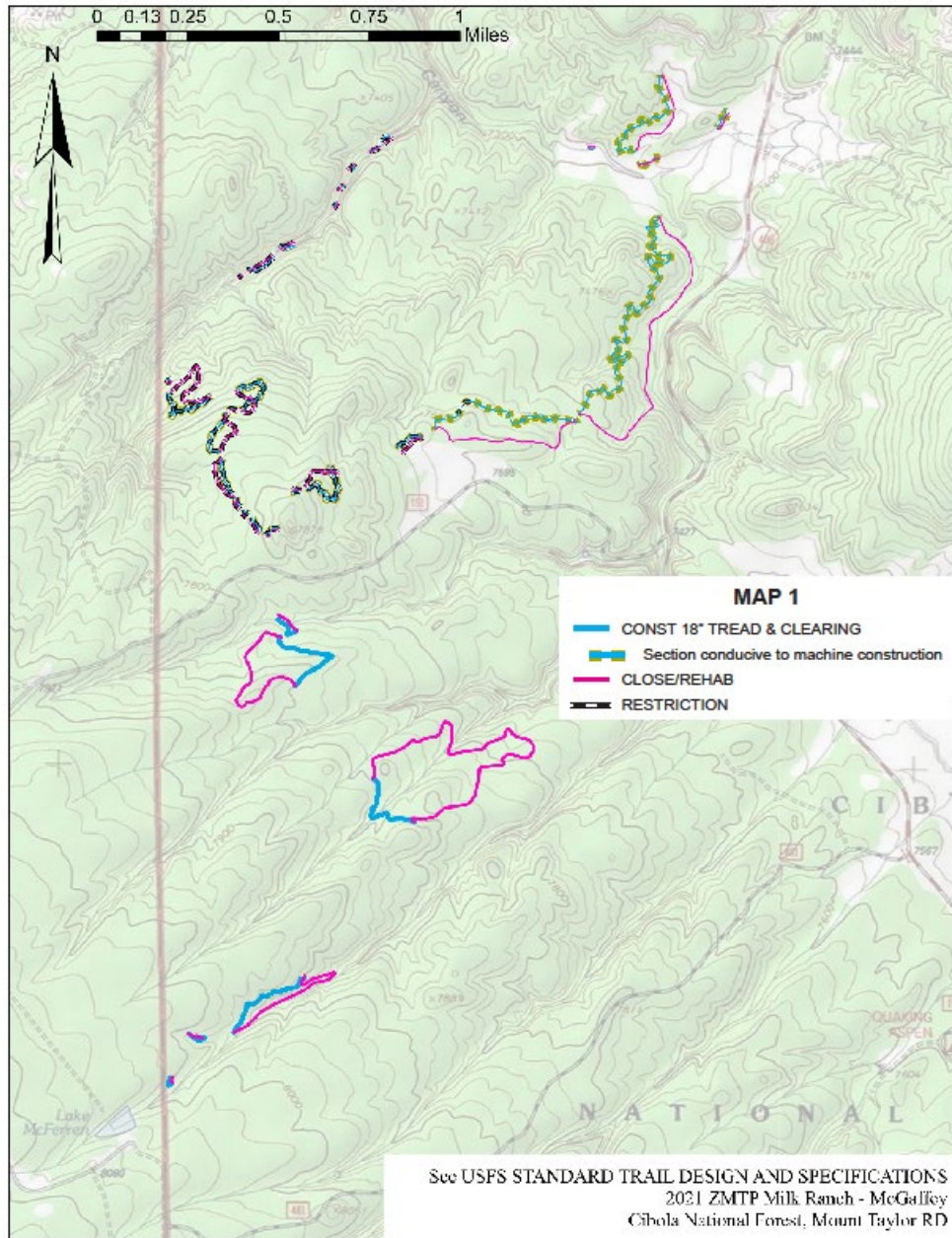
Project Location

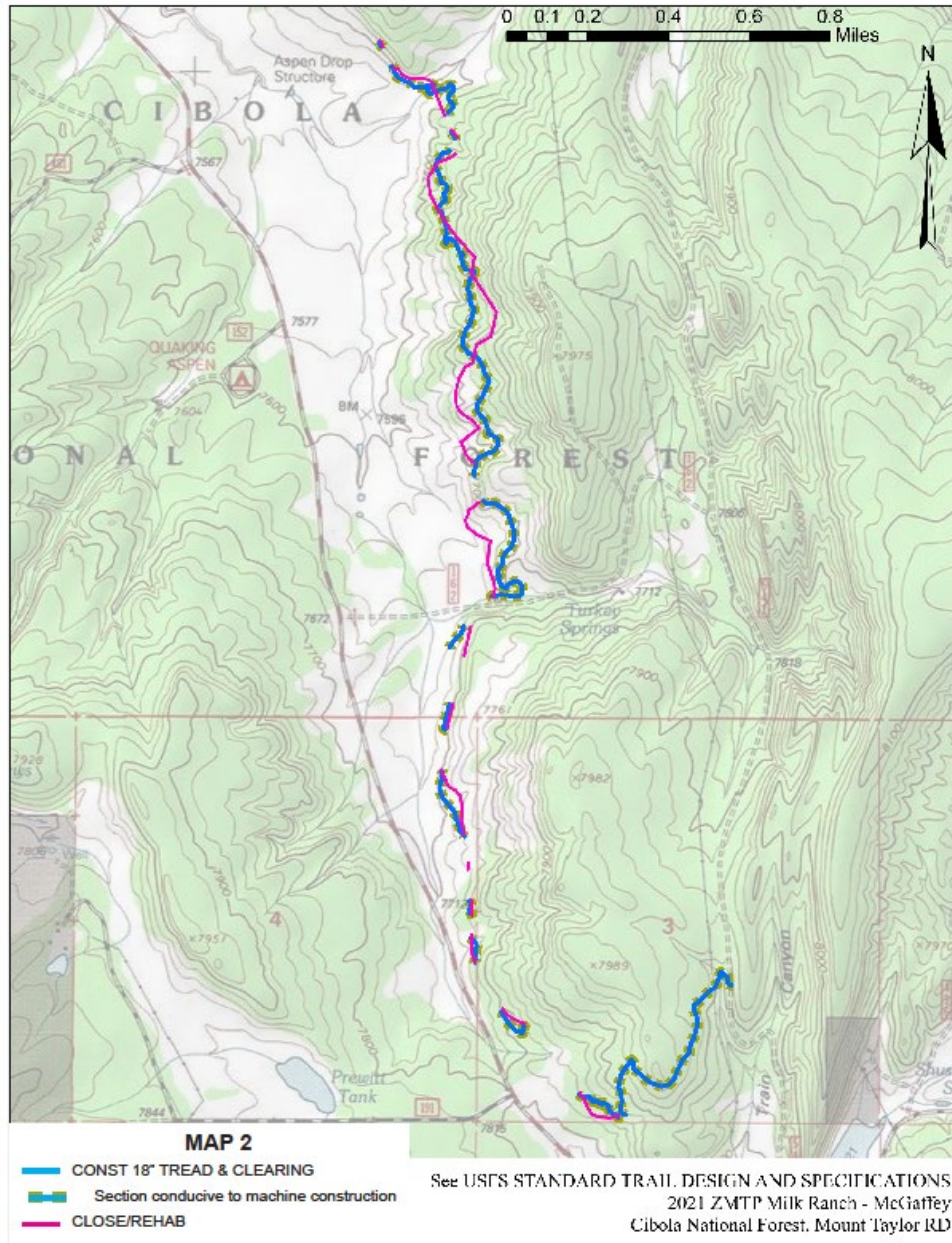
Location - The Milk Ranch-McGaffey Trail System project is located approximately 7 miles SW of Ft Wingate, New Mexico. Access to the area is via a New Mexico State Highway 400.

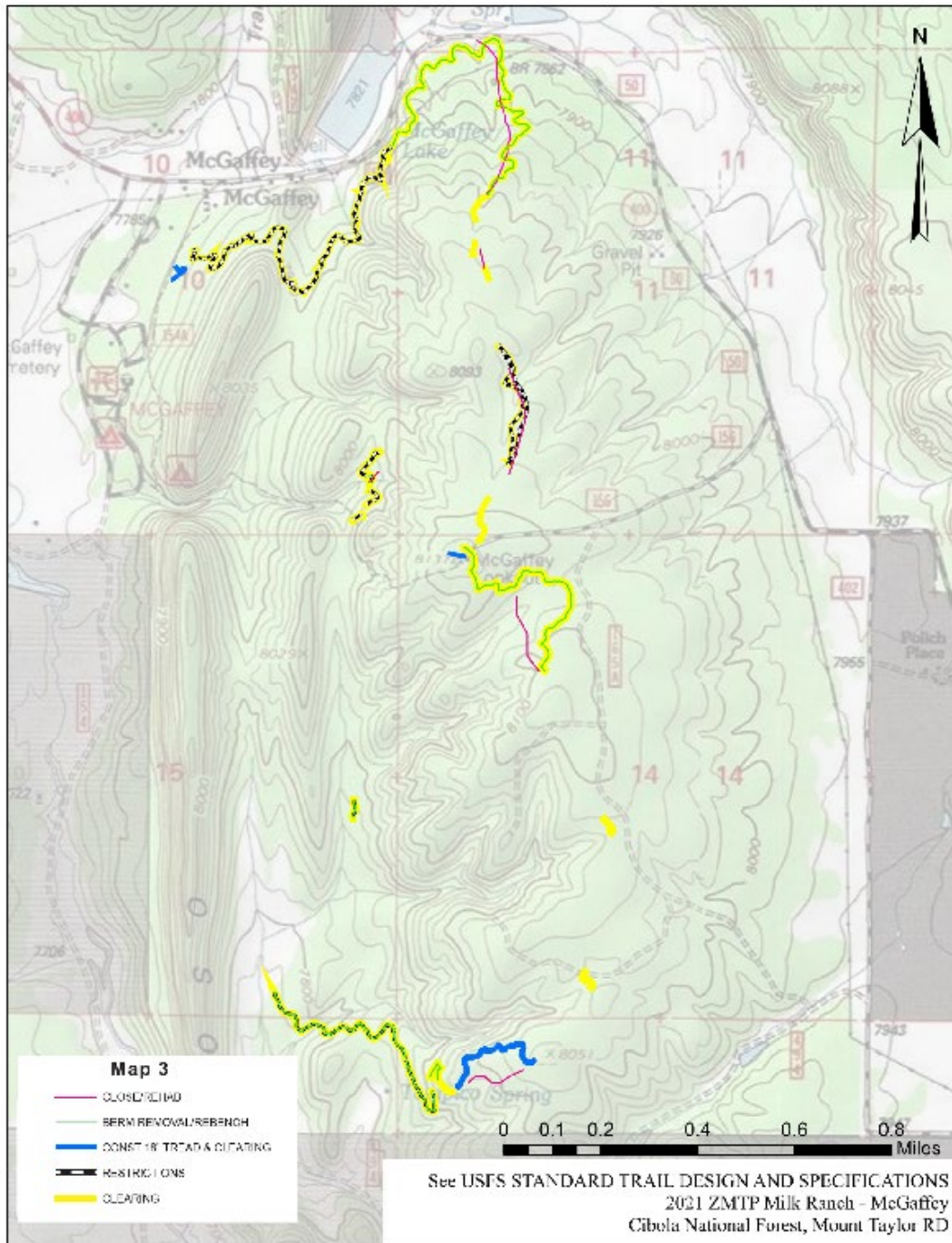


Area Description – The Milk Ranch-McGaffey trail system project is SW of Grants, New Mexico at an average elevation of 7500'. Typical vegetation is openly spaced ponderosa pine forest with pockets of oak and other brush. Areas lower than 7500' are dominated by pinyon-juniper forest. Project area terrain is characterized as rolling with typical side slopes ranging from 0-20 degrees. Soils are generally exposed with pine needle case in the ponderosa with little undergrowth. Various rock formations are present within the project area.

Work Item Descriptions







Work Item Quantities by Map				
	MAP 1	MAP 2	MAP 3	Total
Trail Construction & Clearing (mi)	4.9	2.82	.31	8.03
Close/Rehab (mi)	6.25	2.00	.96	9.21
Berm Removal & Rebench (mi)	-	-	2.66	2.66
Conducive to Machine Construction (mi)	3.5	2.82	-	6.32
Clearing Only (mi)	-	-	4.9	4.90

The total miles of trail work per item are shown on “Work Quantities” table above. Descriptions below provide general direction for each item.

GENERAL NOTES

- Trail alignment will be marked in **pink flagging tape** most often denoting bottom edge of trail bed.
- Clear and construct trails following marked/flagged route. Route changes must be approved by the Forest Service Trail Specialist.
- Portions of some trails are conducive to machine construction and the locations are delineated on Maps 1 & 2.
- Portions of some trails only needs clearing work and the locations are delineated on Map 3.
- Portions of some trails have wildlife restrictions in place beginning March 1, 2021 to October 1, 2021 and no work can be conducted during this time. Wildlife restrictions are delineated on Maps 1 & 3.

WORK ITEMS

1. CLEARING

This work consists of clearing, grubbing, trimming, removing, and treating trees, logs, limbs, branches, brush, plants, and other vegetation within the clearing limits prior to construction of trail tread.

Clearing Limits. See diagram and table below.

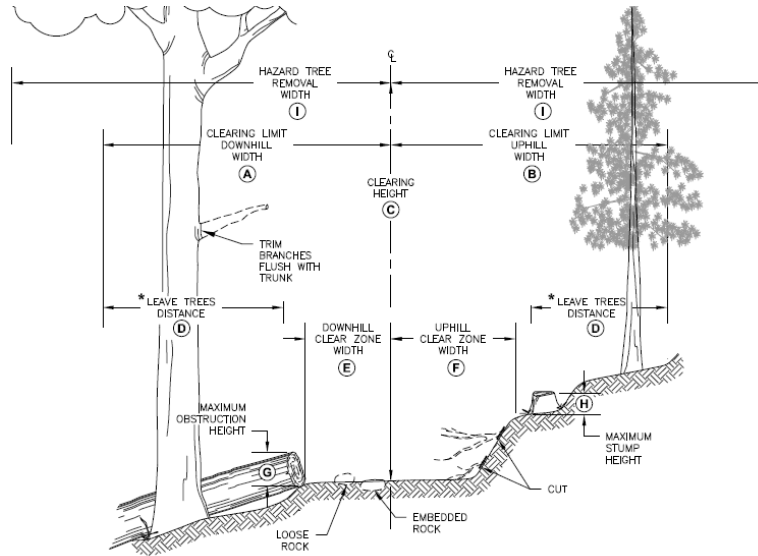
Material to Be Cleared. Remove and dispose of all trees, logs, limbs, branches, brush, herbaceous plants, and other vegetation within CLEAR ZONE(S).

Cut all limbs and branches according to CLEARING LIMITS specifications. Cut limbs flush with the tree trunks or stems or cut at the ground surface.

Live, sound, and firmly rooted trees of 6” or greater DBH in the LEAVE TREE DISTANCE shall not be cut.

Removal of Stumps. Remove all stumps (stump & rootball) within the CLEAR ZONE (no low-stumping). Flush cut stumps located outside of CLEAR ZONE.

Scatter clearing debris below the CLEARING LIMITS. Do not place materials in stream channels, drainage ways, ditches, culvert inlets, or other locations where they would prevent the free flow of water away from the trailbed.



CLEARING LIMITS			LEAVE TREES		CLEAR ZONE	
Downhill Width (A)	Uphill Width(B)	Clearing Height(C)	Distance (D)	Diameter	Downhill Width (E)	Uphill Width (F)
3FT	3FT	8-10FT	2FT	6IN	18IN	18IN

2. TRAIL CONSTRUCTION

This work consists of the excavation and placement of excavated material, regardless of its nature, from within the trailway.

Trailway Excavation and Embankment. Full bench trail construction in mineral soil resulting in 18" trail tread with outslope of 5%. Minor deviations of ± 12 inches in vertical alignment and 36 inches in horizontal alignment with smooth transitions are acceptable.

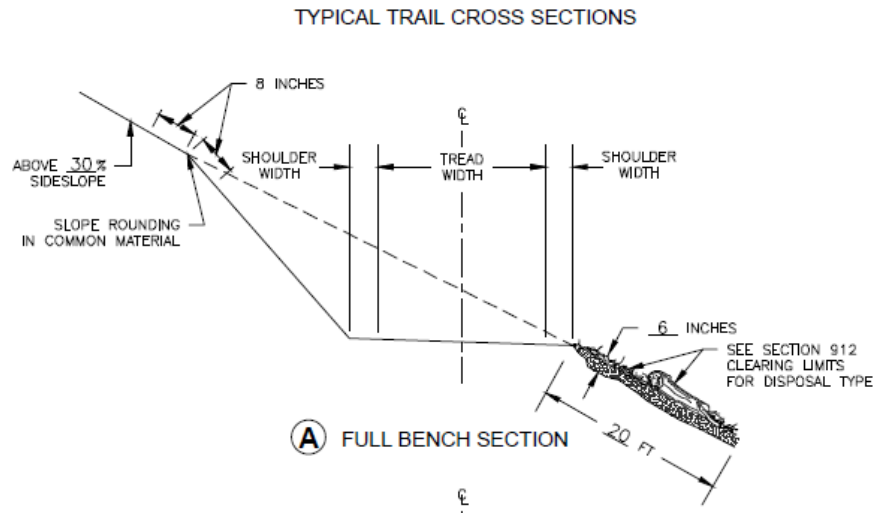
Construct/finish embankments (backslope and below tread) with suitable compacted mineral soil. Compact all disturbed soil within the trailbed area. Remove any loose rock within tread, backslope or above the backslopes that is unstable within the trail prism. Leave the finished slope in a uniform and roughened condition.

Trailbed Finish. Fill holes with suitable material, compact, and cut high points to provide a uniform trailbed finish except where natural features such as large imbedded rocks/rock slabs are present. In these instances, rock shall remain.

Ensure all excavated materials are moved away from tread with no remaining materials forming berms.

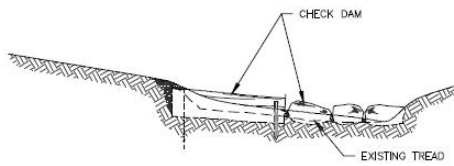
Finished (full bench) trail tread width shall be 18” with exceptions where embedded rocks, rock slabs provide technical features.

In areas with high concentrations/occurrence of lava bedrock, all efforts to clear loose material shall be taken with no expectation for excavation.



3. CLOSE AND REHAB

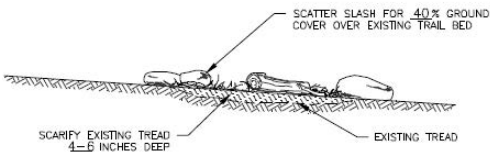
This work consists of removal and disposal of existing structures, including turnpikes, walkways, bridges, culverts, signs and posts, and other material within the trailway, above or below ground. Work also includes salvaging DESIGNATED materials and backfilling the resulting trenches, holes, and pits.



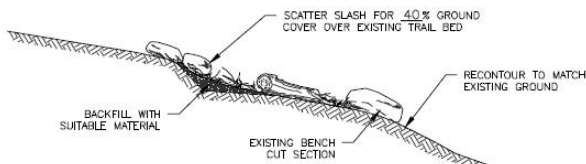
(A) CHECK DAM SECTION

CHECK DAM SPACING

DRAINAGE GRADE %	DRAINAGE SPACING (FEET)
<3	OCCASIONAL
3-7	50
8-12	25
>12	15



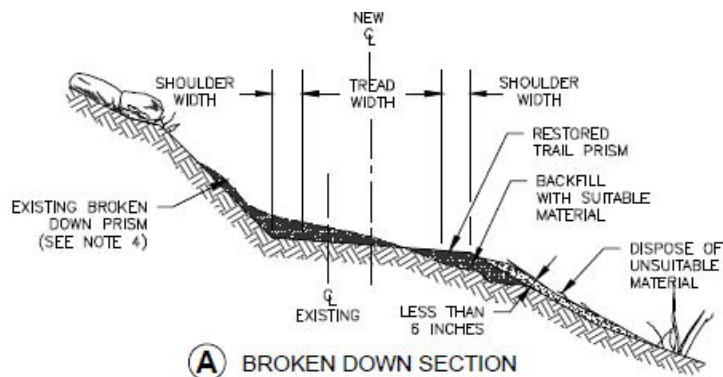
(B) SCARIFICATION AND SLASH PLACEMENT SECTION



(C) RECONTOUR & SLASH PLACEMENT SECTION

4. BERM REMOVAL & REBENCH

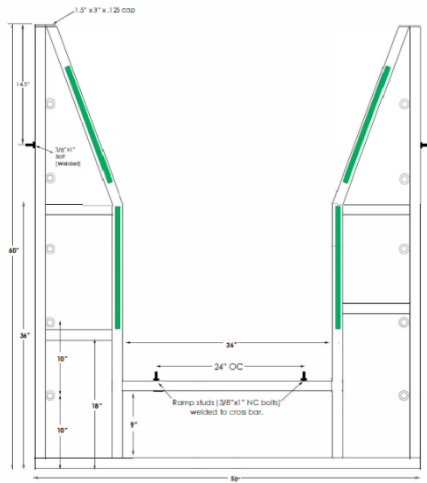
This work consists of restoring the original trail template, including clearing, removing slough and berm, borrow, filling ruts and troughs, reshaping backslopes, excavation, reshaping trail tread, restoring drainage and other trail structures, constructing check dams, and removing protruding rocks, roots, stumps, slough, and berms.



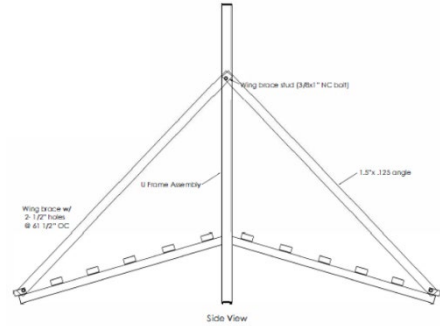
(A) BROKEN DOWN SECTION

5. GATE & LIMITER INSTALLATION

This work consists of installation of 6 mountain bike/rollover cattleguards and 6 equestrian gates at points (as staked/flagged on ground) where new trail construction crosses allotment fencing (cattleguards and gates will be supplied).



Mountain Bike Cattleguard – Installation requires assembly of bike cattleguard and modification of wire fencing – cattleguard sits atop of surface.



Equestrian Gate – Installation requires assembly, excavation of installation holes and modification of fencing.

